



Respiration And Circulation

Reinforcement Worksheet

Teacher Name: Uzma Amer Class: 8 Subject: Science Date: 14th April'17

MCQs

- 1) Which type of blood vessels carries blood away from the heart?
a) Veins b) Arteries c) Capillaries d) Arteries and veins
- 2) What part of the blood carries minerals, vitamins, sugar and other foods to the body's cells?
a) Plasma b) Platelets c) Red cells d) White cells
- 3) Which of the following can best be compared to soldiers?
a) Capillaries b) Red blood cells c) White blood cells d) Platelets
- 4) Oxygen moves from the lungs into the blood stream through,
a) A nerve fiber b) A large artery in the heart
c) A small blood vessels in the lungs d) A tube in the lung
- 5) What body structure protects the lungs from physical injury?
a) Cartilage b) Tiny sac c) The rib cage d) Diaphragm
- 6) Which of the following disease is unlikely to be caused by smoking:
a) lung cancer b) tuberculosis c) bronchitis d) heart attack
- 7) Inhaled air contains about 78 % nitrogen. What is the approximate percentage concentration of nitrogen in exhaled air?
a) 8% b) 10% c) 78% d) 16%
- 8) When we inhale,
a) Our intercostal muscles contract and our ribs move down
b) Our diaphragm muscles contract and the ribs move up
c) Our diaphragm muscles contract and the ribs move down
d) Our intercostal muscles contract and the diaphragm muscles relax.
- 9) Inhalation and exhalation of air is called
a) Breathing b) diffusion c) respiration d) gaseous exchange



The City School

North Nazimabad Boys Campus

E-Worksheet



10) Which statement is not correct when comparing respiration and burning a fuel?

- a) Respiration is fast and not controlled, burning is rapid and controlled
- b) Both respiration and burning produce water and carbon dioxide
- c) Both respiration and burning use up oxygen
- d) Both respiration and burning release heat energy, but only burning gives out li

Q2. Complete the sentences.

Glucose + _____ \diamond _____ + Water

The function of blood platelets is to _____.

The function of heart is to _____.

Arteries and veins are joined together by thin walled vessels called _____.

Q3. Fill in the blanks.

- 1) Another name for the wind pipe is _____.
- 2) Lungs are made up of tiny sac like structures called _____.
- 3) Blood vessels are of _____ types.
- 4) _____ are responsible for blood clotting.
- 5) Pulmonary artery carries _____ blood.

Q4. Write True or False. Rewrite the correct statement.

1) Blood turns dark red when oxygen in it is replaced with carbon dioxide.

2) Pulmonary vein contains oxygenated blood.

3) Upper chambers of human heart are bigger than lower chambers.

4) Oxygenated blood flows through veins.

5) Exchange of gases takes place through thin walls of capillaries.

6) The Blood circulatory system is made up of lungs, blood and blood vessels.

7) Human heart has five chambers.



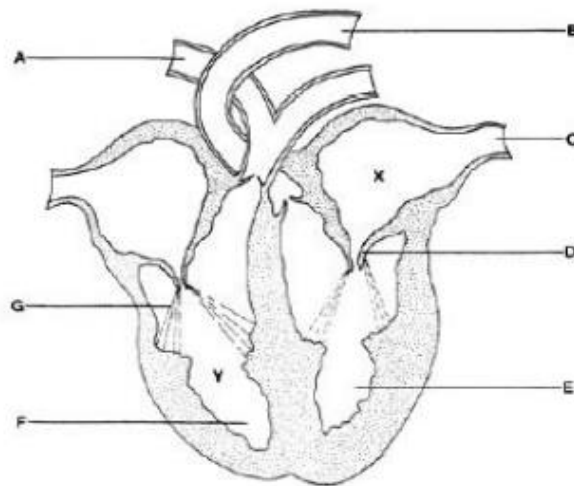


8) The right side of heart receives oxygenated blood.

Q.5. identify the structures using clues given below:

- (i) Can destroy bacteria _____
- (ii) Carries carbon dioxide _____
- (iii) Carries blood to organs _____
- (iv) Carries blood from organs _____
- (v) Carries oxygen _____
- (vi) Controls flow of blood direction _____

. Look at the diagram of the human heart and answer the questions.



a) Describe the relative oxygen content of the blood at points X and Y on the diagram.

b) What is the function of D in the heart?





c) Part labeled as A is the pulmonary artery. How is different from other arteries in the body?

d) Identify F and E parts in the heart diagram. Explain why does part E exert more pressure than F?

