



Name: _____ Date: _____ Section: _____

TOPIC: AGRICULTURE

Q) Elucidate the improvements brought to the agricultural sector since 1960s.

Q) Evaluate the reasons why Green revolution has been beneficial for the agricultural sector of Pakistan.

Qa) What are tube wells?



(b) What lead to increase in use of tube wells in the agriculture sector?

Years	No. of tractors
1960	1665
1975	33136
1990	300000
2004	401700

(c) Why not all farmers were able to install the tube wells?

Qa) What is meant by the term "Mechanization" and what is it used for?

(b)The given table shows the growth in the use of tractors after the green revolution.

1) Write the reasons of growth in the use of tractors.

2) What is meant by HYV seeds?

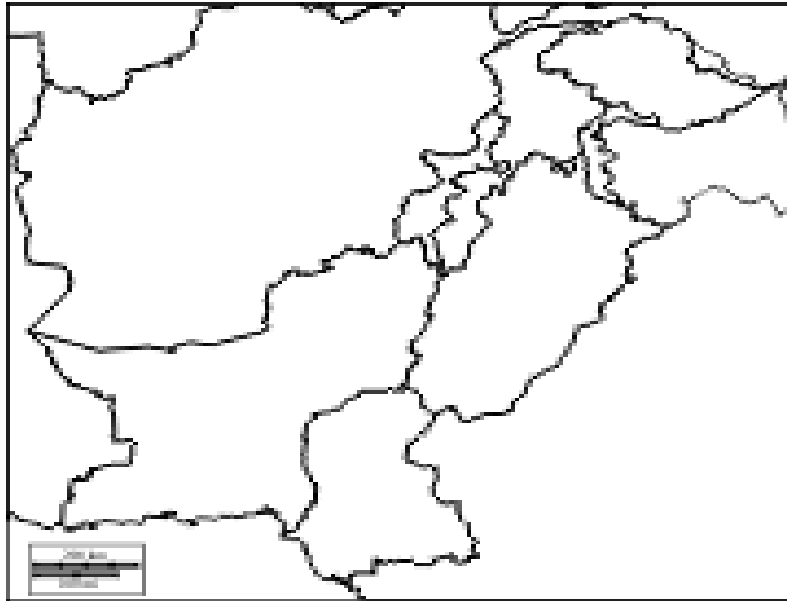


3) Write the characteristics of Super Rice.

Q) Highlight the problems associated with the Green Revolution.

Q) Study fig: 3.23 and note down the main features of the Indus irrigation system after the irrigation works specified in the Indus Water Treaty had been constructed.

Q) Color the areas where cultivation is done in Pakistan and answer the questions below.



(a) Why Punjab has the largest cultivated area?

(b) Why do farmers rely over canal water?

(c) Why River Indus irrigation system is best developed system in world?

Q) Do Rivers make good boundaries? Reason.

Q) Why Tarbela dam is expected to lose its 50% storage capacity?

Q) Differentiate between a dam and a barrage

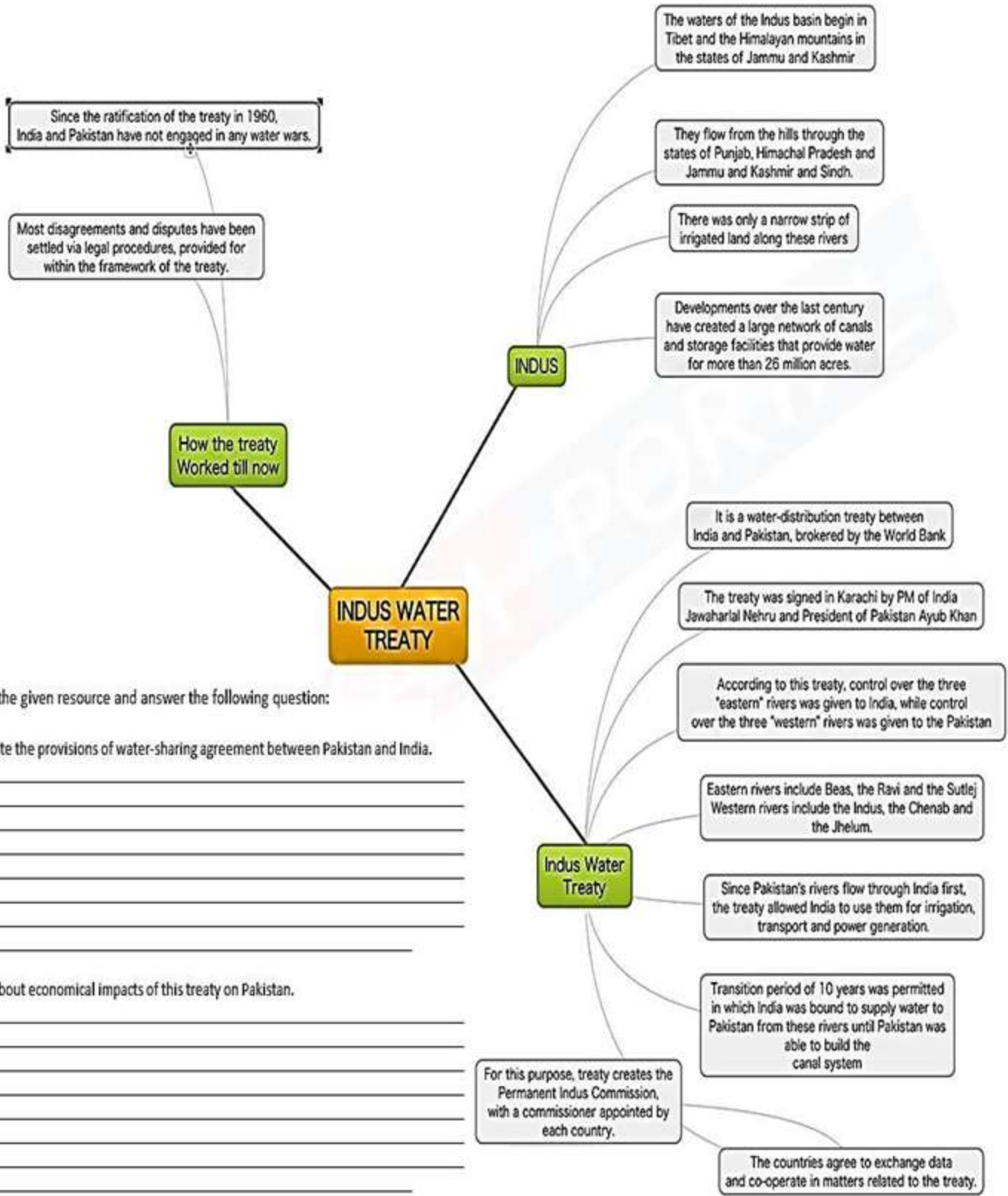


Dam	Barrage

Q) Name 3 main dams and barrages on rivers of Pakistan

Q) How the construction of Tarbela dam affected the life of people in the area?

INDUS WATER TREAT (BACKGROUND AND PROVISIONS)



Q: Study the given resource and answer the following question:

1. Elucidate the provisions of water-sharing agreement between Pakistan and India.

2. Write about economical impacts of this treaty on Pakistan.

**TOPIC:
INDUSTRIES**



Q) Differentiate between:

Social Development	Economic Development

Q) Discuss the development of Aswan Dam in Egypt and its negative impacts on environment.

Q) With the help of the table below. Answer the below mentioned questions.

Countries	Rate of infant mortality per thousand live births	Life expectancy in years	Under five mortality rate (per 1000 live birth)	GDP per head US dollars	% with access to safe water	Literacy rate adult total (% of people ages 15 and above)	Number of persons per doctor	Internet use (% of population)
Bangladesh	70	65	38	1380	80	38	12884	14.4
China	25	88	11	2920	85	82	1063	50.3
India	75	65	48	1400	70	52	2459	26.0
Iran	30	75	16	5470	89	69	3140	45.3
Malaysia	10	75	07	9020	80	83	2477	71.1
Pakistan	80	70	81	2230	70	45	1923	18.0

Saudi Arabia	30	85	15	10256	90	63	749	69.6
--------------	----	----	----	-------	----	----	-----	------



1. Which country do you think is least developed?

2. Which country in this table do you think are most developed?

3.

4. Do you think some of the columns are more important than others as a measure of quality life?
Given reason for your choice.

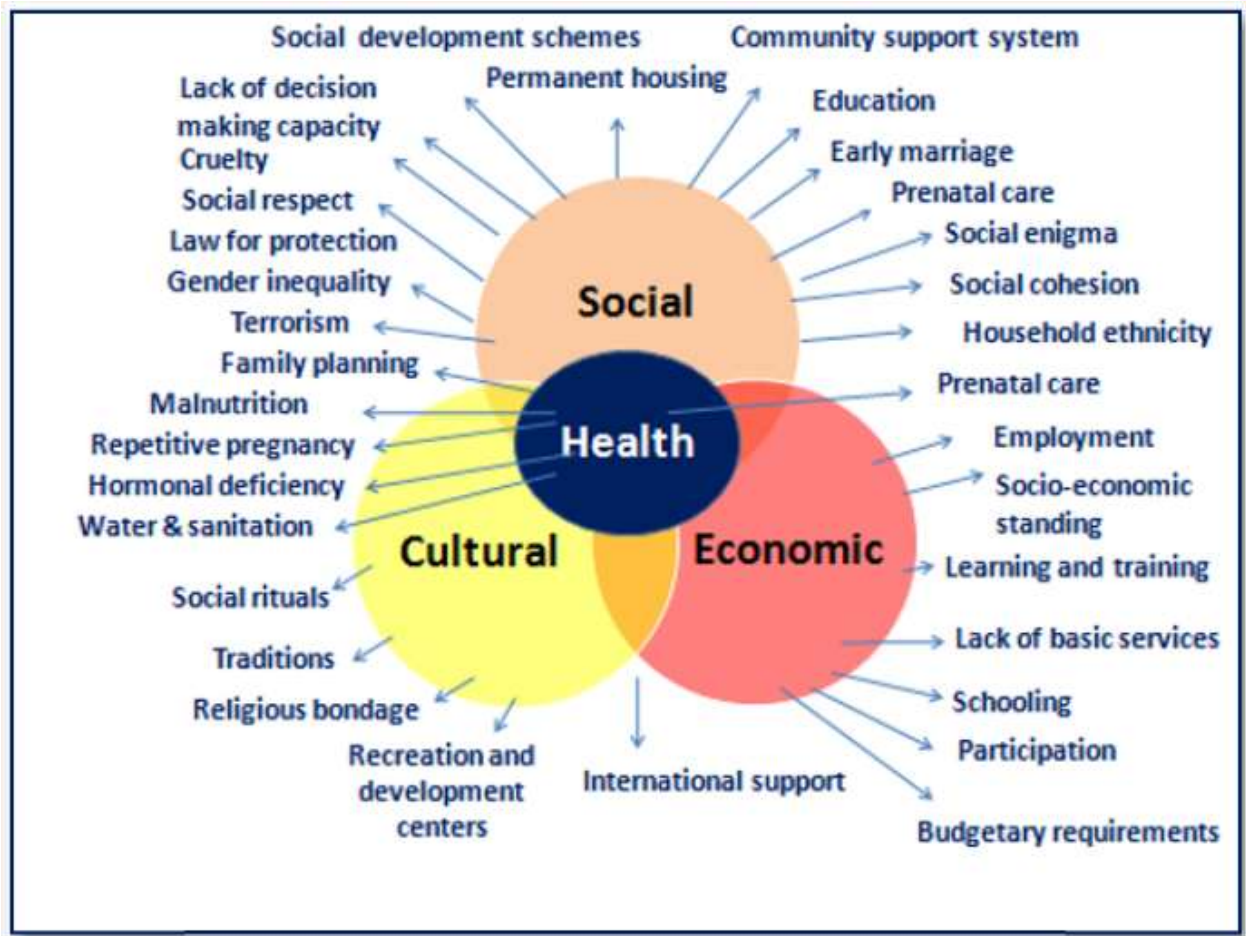
Q) Discuss the new education policy introduced in the late 1990s for Government schools.

Q) When was TCF established? Locate the TCF branch schools in Pakistan.



Q) Define Tourism and its types.

Q) Describe the social effects of tourism on a country.



Q) Study the given Venn diagram and write your observations.

TOPIC: POWER

Q) Define the following:

1. Solar energy



2. Two reasons for transmission line losses.

3. Nuclear energy

4. Two reasons for low productivity of energy resources.

Q) In what ways, has load shedding and power crisis hampered the economy?

Q) Under-exploitation of indigenous resources is a reason for Pakistan's poor power generation. Why?

Q) Give one word answer of the following:

1. Two largest IPP's: _____
2. Cool Earth Project is about which type of energy: _____
3. Worst power crisis was in year: _____
4. Pakistan's first nuclear power plant: _____
5. Fossil fuels are used for which type of energy generation: _____



6. Using solid conductor in transmission lines is better than:

7. Pakistan's energy generation capacity has shrunk by:

8. Pakistan's largest Hydel power plant is:

9. Thermal power plants can accommodate:

10. KANUPP-I and KANUPP-II is being set-up in collaboration with:

Q4a: Identify the following pictures and answer the related questions:











b. Which of the energy source is more sustainable? And why?

**TOPIC:
ENVIRONMENT**

Q) Discuss the relationship between environment and development in detail.

Q) Why do you think there are constant delays in construction of Kalabagh Dam.

Q) Look at the given source and answer the questions:

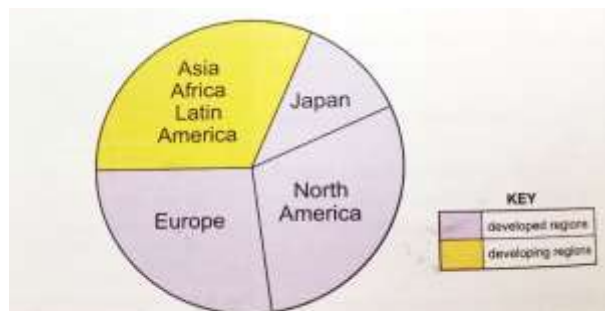


Fig. 4.11 : The use of pesticides by developed and developing countries

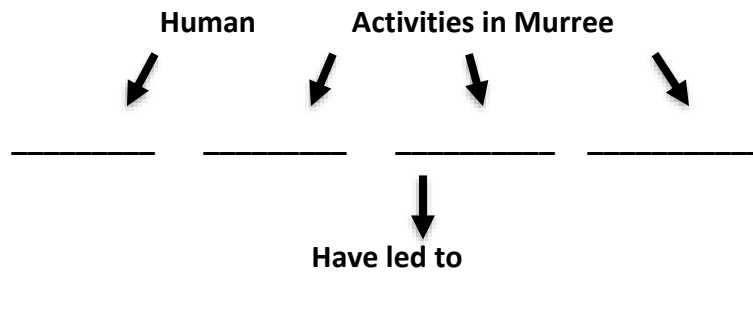


- Name the crop on which 70-80% pesticides are used?

- If the use of pesticides is banned then why developing countries buy them?

- Why Farmer's use of pesticides is increasing every day?

Q) Complete the flow chart.



Q) Identify the type of soils with the help of given definitions.

1. Soil with a white surface: _____
2. Soil with a hard upper layer and a black crumbly surface : _____
3. Soil with a white and black crust on the surface: _____
4. Soil that is waterlogged: _____

Q) Observe the following picture and answer the following question.





(a) Name the sea in aforementioned picture.

(b) What was the cause of this natural environment disaster?

(c) How this disaster effect life of humans?

TOPIC:
TRADE, TELECOMMUNICATION AND TRANSPORT

Q) How is studying Geography is essential to become a good global citizen?

Q) "Globalization is an open fact." Analyze the factors are responsible for globalization.



Q) What do you think is impact of globalization on the health and education sectors of developing countries?

Q) 'World is shrinking' do you agree? Justify your opinion with logical reasons.
