



Q.1 Choose the correct answer:

-

- i) Where does gaseous exchange takes place?  
a) lungs  
b) bronchi  
c) alveoli  
d) trachea
- ii) From which process do living thing get their energy?  
a) photosynthesis  
b) excretion  
c) digestion  
d) respiration
- iii) Which parts of blood transport materials in the human blood circulatory system?  
a) Platelets  
b) Plasma  
c) Red blood cell  
d) White blood cell
- iv) Most veins carry blood with very little oxygen. Which veins are the exceptions?  
a) Jugular vein  
b) Pulmonary vein  
c) Renal vein  
d) Hepatic vein

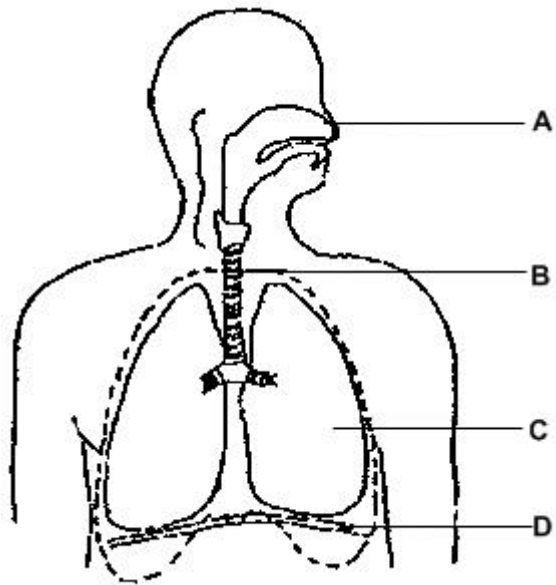
Q.2 FILL IN THE BLANKS:

- i) \_\_\_\_\_ makes up more than half of the total blood volume.  
ii) Veins carry blood back to the heart.  
iii) The left side of the heart receives \_\_\_\_\_ blood from the lungs and pump it to rest of the body.  
iv) During aerobic cellular respiration glucose reacts with \_\_\_\_\_ in the cells to produce energy.

Q.3 Differentiate between **breathing** and **respiration**.

Q.4 Write a word equation of respiration.

Q.5 Label the following diagram.



Q.6 Give reasons:

- a) Alveoli are good for gas exchange.
- b) Muscles of heart need a large supply of blood.
- c) Less energy is released during anaerobic respiration than during aerobic respiration.